

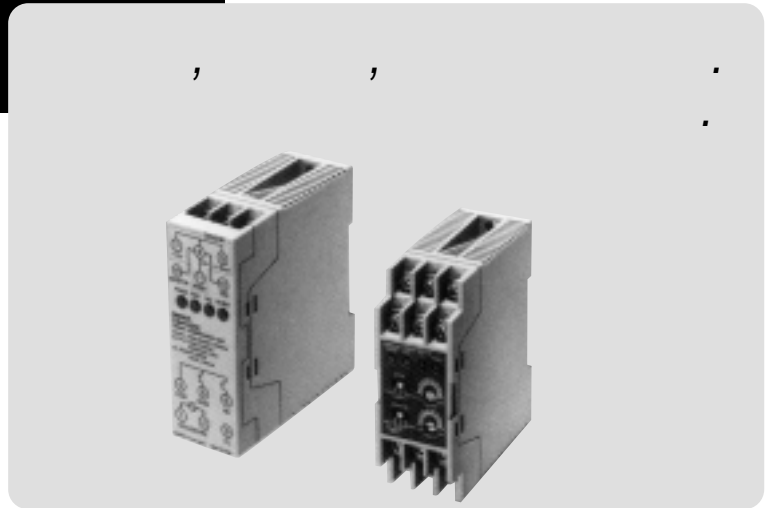
Z4W-D

4~20mA

, PASS/NG
, DC12V 200mA

POWER.

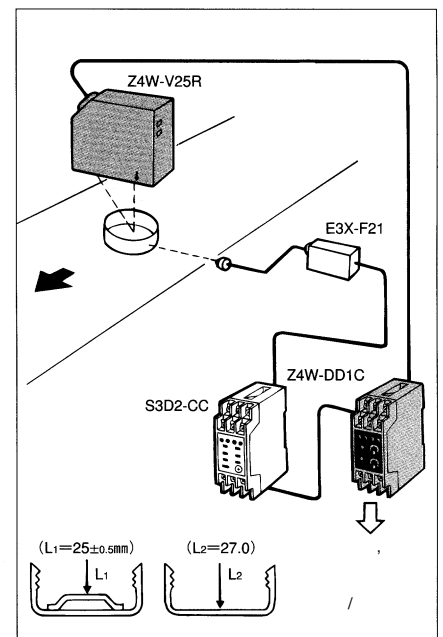
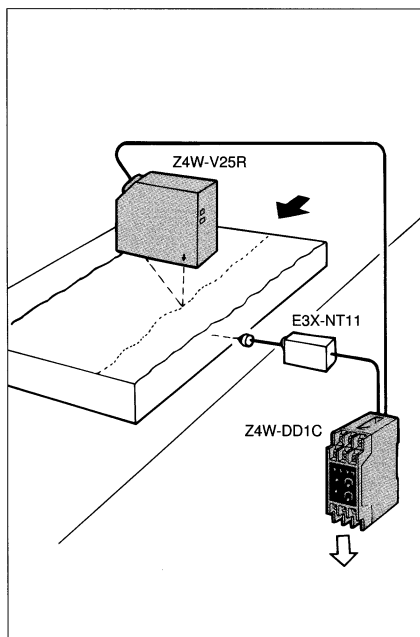
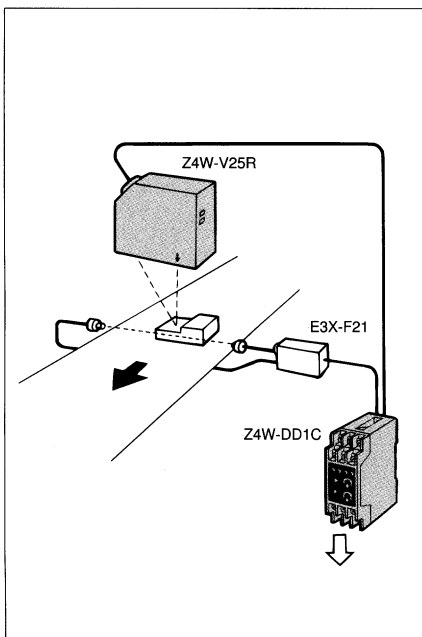
30mm



S3D2

Z4W-D

AC100~240V	<ul style="list-style-type: none"> • DC4~20mA • • 	<ul style="list-style-type: none"> • PASS • NG 	Z4W-DD1C
------------	--	--	----------



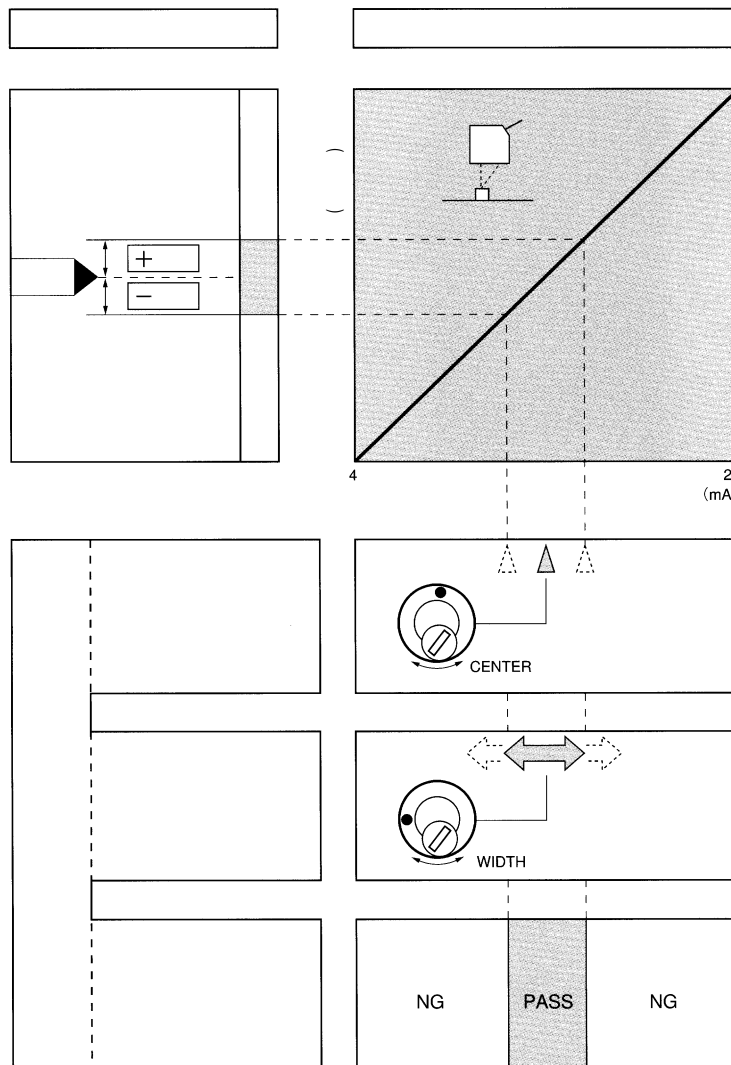
Z4W-D

/

Z4W-DD1C	
	AC100~240V ±10% 50/60Hz
	15VA
	DC12V ±10% (), 200mA ()
()	DC4~20mA
()	NPN (ON)
()	NPN , ON OFF
(4~20mA)	DC4~20mA 100 30mA
(TRIG)	ON 0~3V
(INHIBIT)	OFF 9~12V 15mA 가 13.2V
()	TRIG 1ms NORMAL OFF D 5ms
	4~20mA() ±1.25%~ ±25%FS
()	1%FS
(PASS/NG)	NPN DC30V 100mA (1V) 2
(MONITOR)	DC1~5V (, ,) ±1.25%FS
LED	POWER, PASS() 2 NG, INHIBIT() 2
	OFF-D , 40 ± 8ms(PASS)
	400ms OFF(TYP. 2s, 3.5s)
	±1,500V(p-p) 100ns, 1us, 1ns
()	10~55Hz 0.75mm X, Y, Z 3 2h
()	200m/s ² [20G] 6 3 (, ,)
	20ms
	: -10~+55 , : -15~+65 (, ,)
	, : 35~85%RH(,)
	140g()

S3D2
Z4W-D

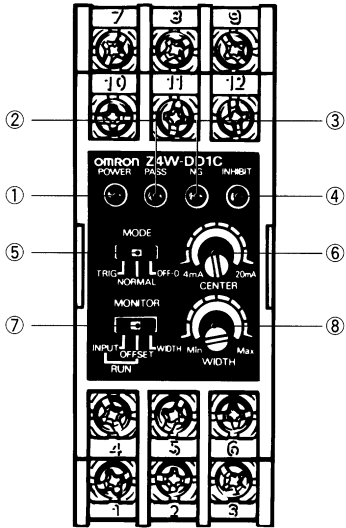
- DC4~20mA
- SW
- PASS(), NG()
- (DC12V,
- 200mA)
- 2
- (),
- ±
- 2



S3D2

Z4W-D

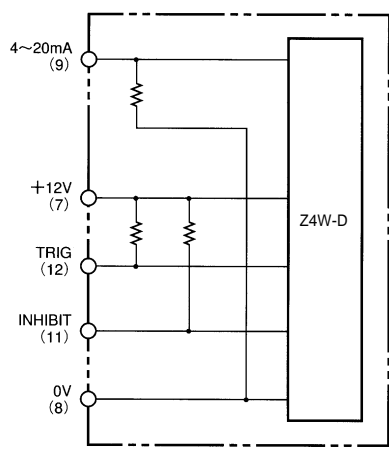
Z4W-D



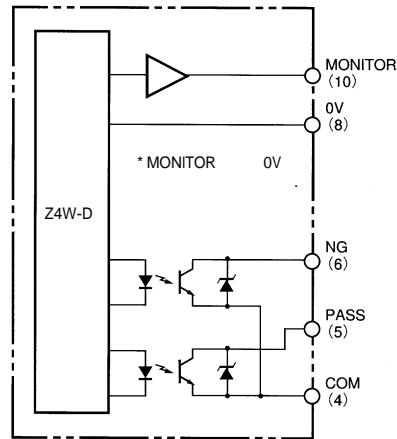
S3D2
Z4W-D

No.	
(POWER •)	OFF ON, (+12V, 0V가)
PASS (PASS •)	PASS가 ON
NG (NG •)	NG가 ON
(INHIBIT •)	(INHIBIT, PASS, NG) OFF가 (.)
(MODE)	TRIG : 가 ON ON () (TRIG NORMAL : ON ON OFF : ON OFF 5ms OFF-D : PASS 40ms () ON PASS ON OFF 5ms
(CENTER)	(4~20mA / 2)
(MONITOR)	RUN : INPUT OFFSET INPUT : 4~20mA 1~5V OFFSET : 4~20mA 1~5V 3V가 WIDTH : $V \times [V] = \pm W_0 [\%FS]$ $V_x = 3 + W_0 \times \frac{1}{25}$
(WIDTH)	($\pm 25\%FS$ / 2)

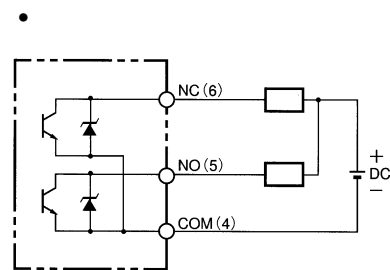
• TRIG (MODE) TRIG
 • OFF (MODE) OFF-D
 PASS
 NG



: ()



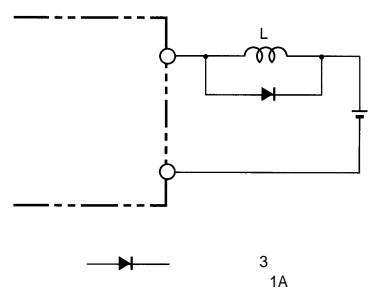
: ()



/

• Z4W-D (,)
Z4W-D가 가 .

• NPN
2 ,



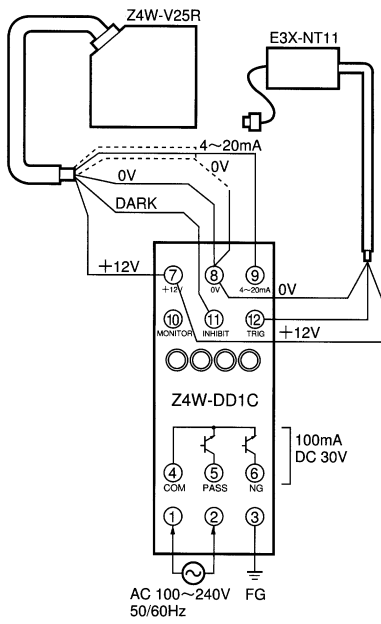
Z4W-D

4~20mA , 4~20mA

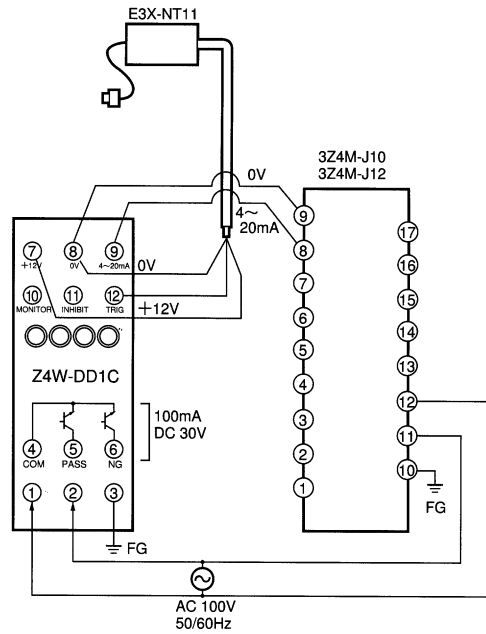
E4DA

, E3XA/E3SA

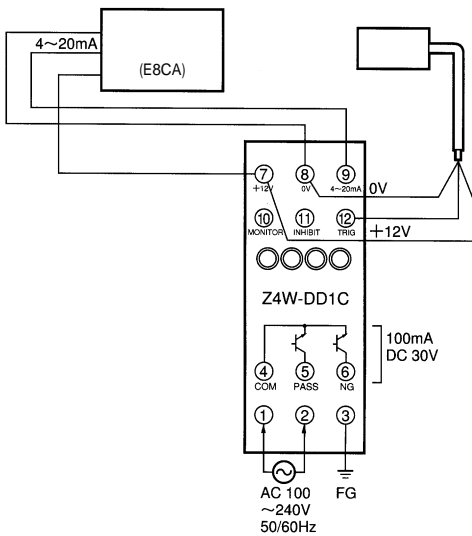
(Z4W-V)



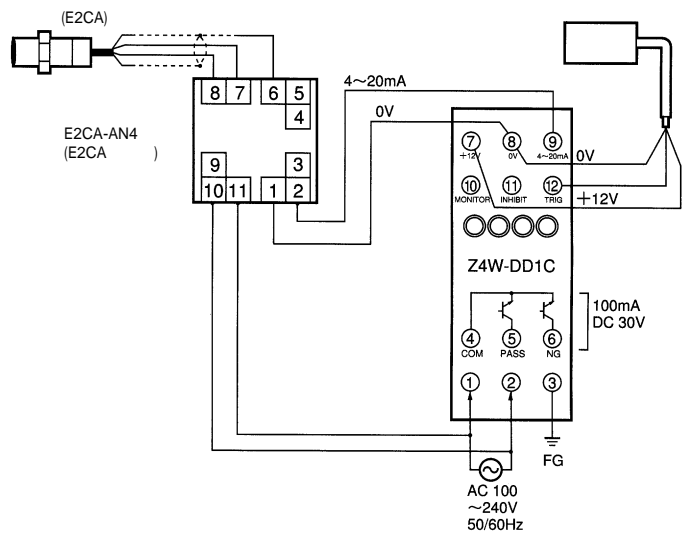
(3Z4M-J10/-J12)



(E8CA/E8AA)



(E2CA)



/ , Z4W-DD1C (RUN) 가 Z4W-DD1C
 , PASS/NG)
 P.1275
 가
 가가 , Z4W-
 DD1C (, PASS/NG)
 가
 Z4W-DD1C (MODE) 「NORMAL」
 (WIDTH) 「MIN」
 . ()
 (CENTER) , PASS
 . (「PASS」가 가
 「PASS」가
 WIDTH 가
 가 + -
 Z4W-DD1C (MODE) 「NORMAL」
 (WIDTH)
 , PASS
 NG , PASS
 NG , PASS

	TRIG	((TRIG) 가)
(MODE)	NORMAL	<ul style="list-style-type: none"> • (INHIBIT) OFF () OFF가
	OFF-D	<ul style="list-style-type: none"> • 「NORMAL」 40ms가 • PASS ()
(MONITOR)	RUN(「INPUT」 「OFFSET」)	

() 0V ()
가 P.1278

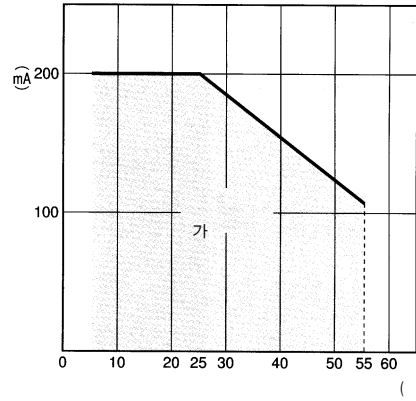
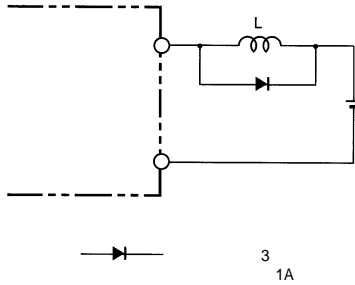
S3D2
Z4W-D

Z4W-D

[Empty box]

AC100~240V ±10%

[Empty box]



• Z4W-D
Z4W-D

0.4s
가

0.4s
• Z4W-D

Z4W-D
.

ON
• Z4W-D

가

0.4s (3.5s)

• Z4W-D

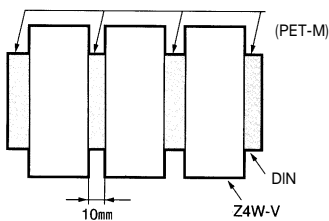
OFF

ON 가

• Z4W-D

• Z4W-D

, 10mm



10mm
PFT-M

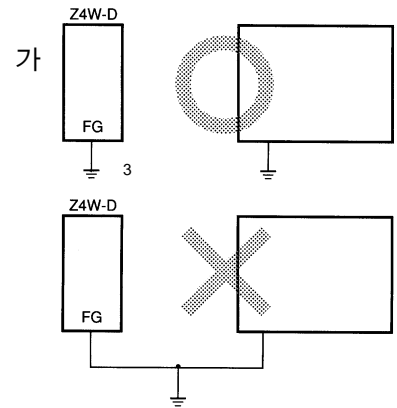
• FG

Z4W-D가

가 가

3

(100)



• Z4W-D

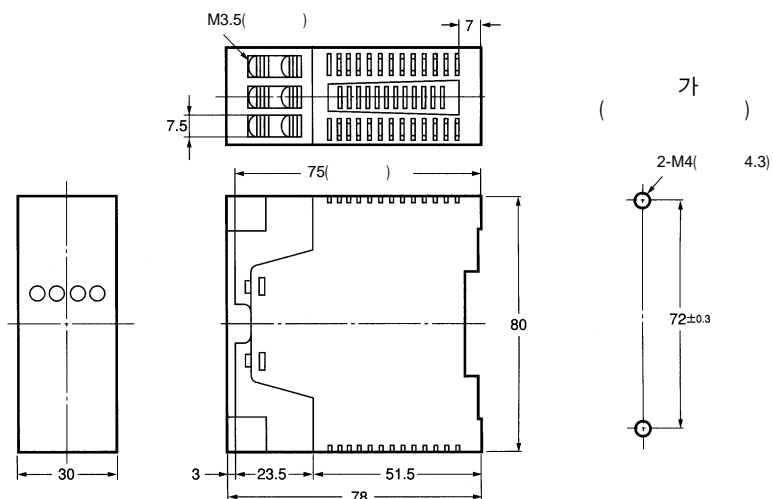
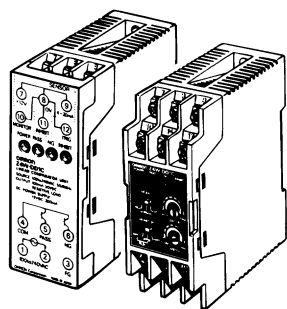
• (20cm)

가

) Z4W-D

() : mm

Z4W-DD1C



S3D2

Z4W-D